

A.M.R.E. CARPI MODENA ITALY
 FICHE TECNICA

MOTORE TRAZIONE
 CODICE AMRE
 16520Y

TENSIONE
 96 VOLT

POTENZA
 36 KW

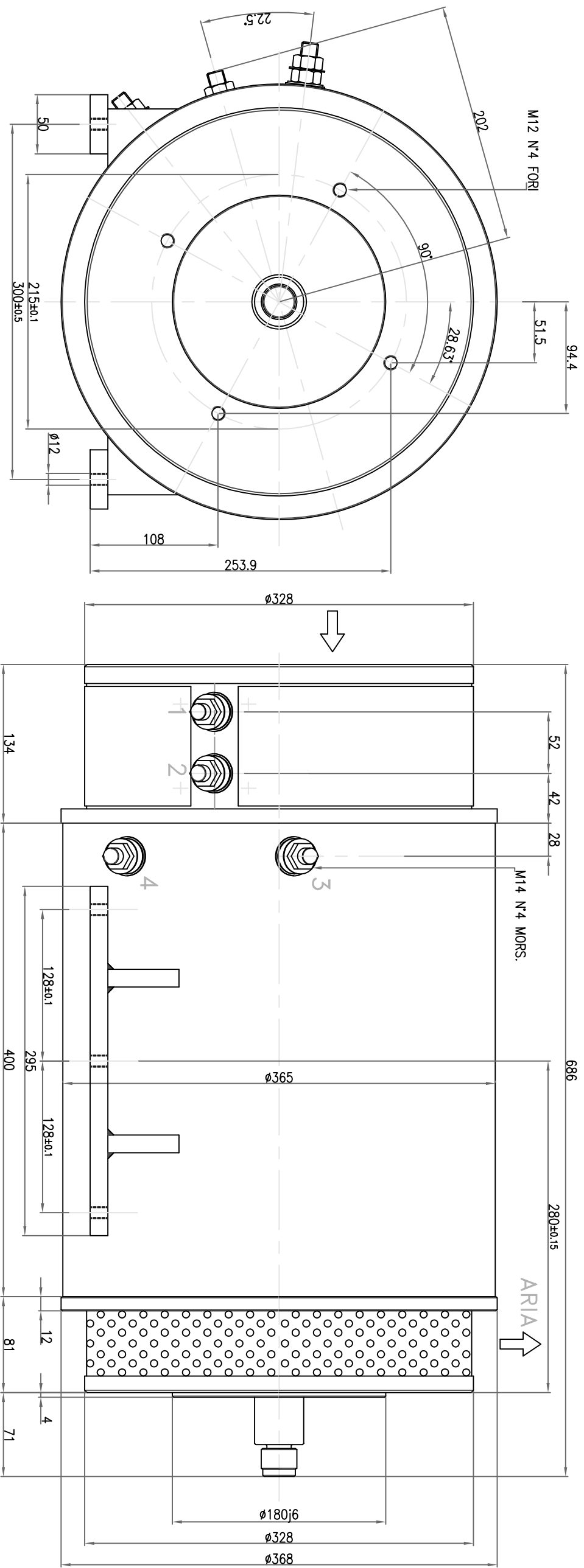
CORRENTE
 446 AMP

TEMPI DI SERVIZIO
 S2 60 MIN
 S3 60 %

VELOCITA'
 1650 G/M

PESO
 300 Kg

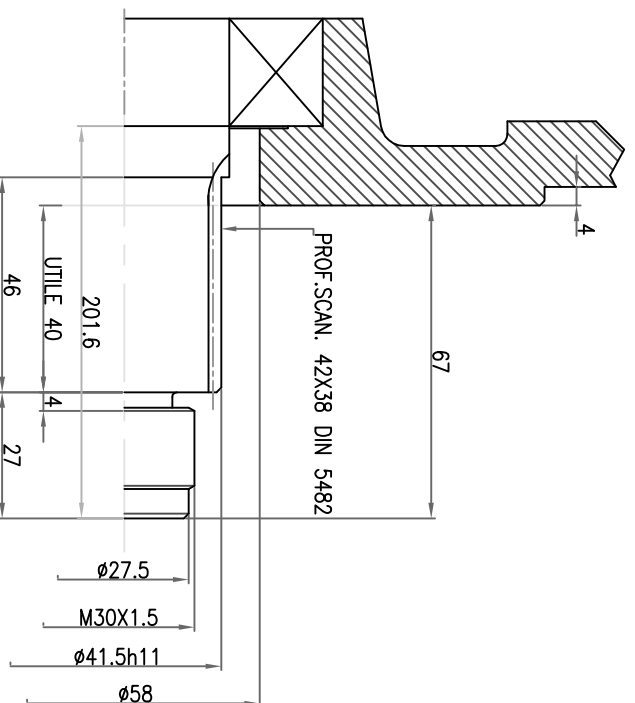
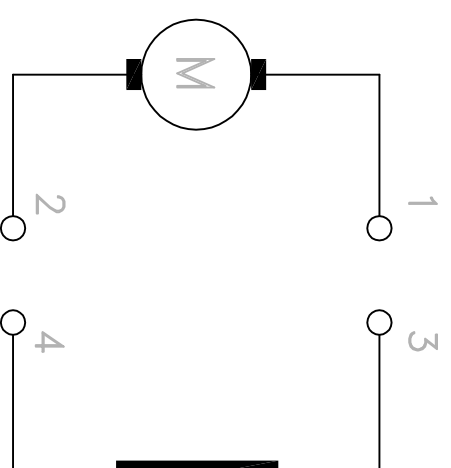
CLASSE D'ISOLAMENTO
 H



MOTORE CONFORME
 ALLE NORMATIVE
 I.E.C. C.E.I. C.E.E.



SCHEMA ELETTRICO



FILE

16520Y

DISEGNATORE

DATA

RESP.